



# INDOFINE Chemical Company, Inc.

121 Stryker Lane, Bldg. 30, Suite 1 • Hillsborough, NJ 08844 • U.S.A.

Phone: (908) 359-6778 • FAX: (908) 359-1179

website: [www.indofinechemical.com](http://www.indofinechemical.com)

e-mail: [chemical@indofinechemical.com](mailto:chemical@indofinechemical.com)

## CERTIFICATE OF ANALYSIS

Catalog Number: 19-490

Product Name: **4-CHLORO-2',4',6'-TRIMETHOXYCHALCONE**

Lot Number: 0205103

Chemical Formula: C<sub>18</sub>H<sub>17</sub>ClO<sub>4</sub>

Molecular Weight: 332.79

Melting Point: 125-130°C

Appearance: Yellow powder

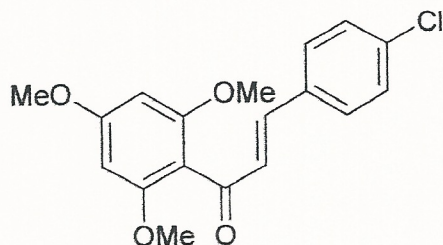
Solubility: Soluble in Chloroform

TLC: Hexane:Ethyl acetate (7:3)

NMR Spectrum: Enclosed

Storage: Store in a cool, dry place

Purity(HPLC): 97.32%





# INDOFINE Chemical Company, Inc.

121 Stryker Lane, Bldg. 30, Suite 1 • Hillsborough, NJ 08844 • U.S.A.

Phone: (908) 359-6778 • FAX: (908) 359-1179

website: [www.indofinechemical.com](http://www.indofinechemical.com)

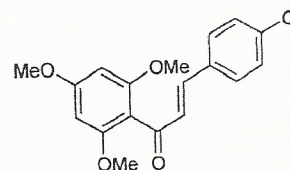
e-mail: [chemical@indofinechemical.com](mailto:chemical@indofinechemical.com)

## HPLC ANALYSIS

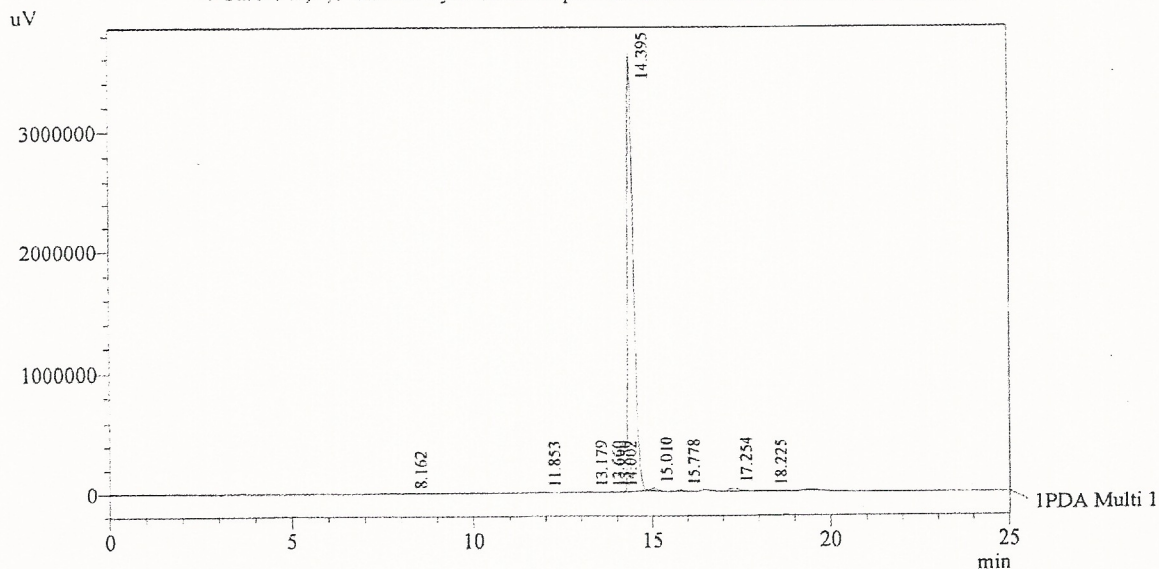
Acquired by : Sanjeev  
Sample Name : 4-Chloro-2',4',6'-trimethoxychalcone  
Sample ID : Lot No:- 0205103  
Injection Volume : 20 uL  
Data Filename : 0404131.lcd  
Method Filename : Linear Gradient.M.lcm

Catalog No.: 19-490  
Product name: 4-Chloro-2',4',6'-trimethoxychalcone  
Lot No.: 0205103

Column : LUNA C-18(2), (250mm x4.6mm 5.0µ)  
Flow : 1.000 mL/min.  
Mobile Phase : A(water) B(Acetonitrile)  
0.01 90 10  
8.0 10 90  
14.0 10 90  
17.0 90 10  
25.0 90 10  
Diluent : Acetonitrile



Chromatogram  
4-Chloro-2',4',6'-trimethoxychalcone D:\promonence\Data\2013\APR-2013\0404131.lcd



1 PDA Multi 1 / 230nm 4nm

PeakTable

Peak#	Name	Ret. Time	Area	Area %	Relative Retention Time
1	RT:8.162	8.162	32075	0.08	0.57
2	RT:11.853	11.853	28677	0.07	0.82
3	RT:13.179	13.179	32123	0.08	0.92
4	RT:13.660	13.660	12620	0.03	0.95
5	RT:13.850	13.850	17713	0.04	0.96
6	RT:14.002	14.002	12971	0.03	0.97
7	4-Cl-2',4',6'-trimethoxychalc	14.395	40328113	97.32	1.00
8	RT:15.010	15.010	253607	0.61	1.04
9	RT:15.778	15.778	135971	0.33	1.10
10	RT:17.254	17.254	541614	1.31	1.20
11	RT:18.225	18.225	42785	0.10	1.27
Total			41438270	100.00	



INDOFINE Chemical Company, Inc.

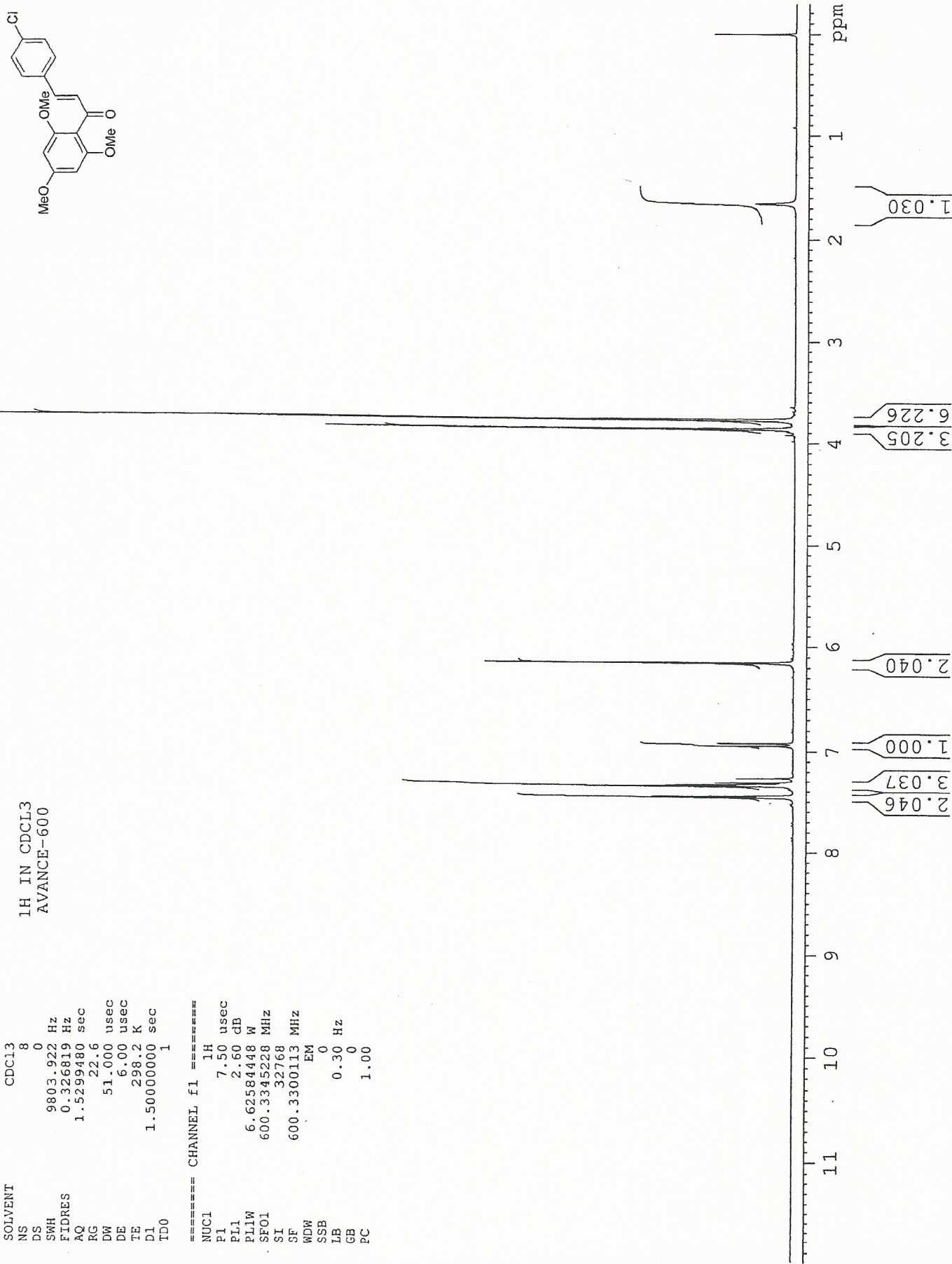
121 STRYKER LANE  
BLDG. 30, SUITE 1  
HILLSBOROUGH, NJ 08844

Catalog No.: 19-490  
Product name: 4-Chloro-2',4',6'-trimethoxychalcone  
Lot No.: 0205103

1H IN CDCL3  
AVANCE-600

SOLVENT CDC13  
NS 8  
DS 0  
SWH 9803.922 Hz  
FIDRES 0.326819 Hz  
AQ 1.5299480 sec  
RG 22.6  
DW 51.000 usec  
DE 6.00 usec  
TE 298.2 K  
D1 1.50000000 sec  
TD0 1

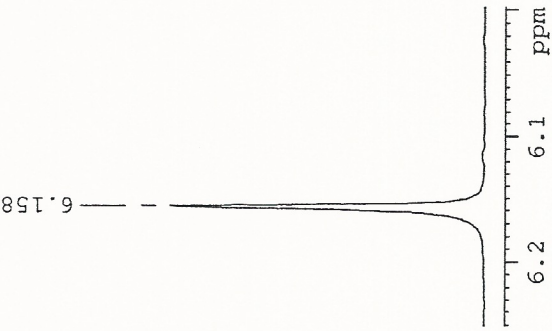
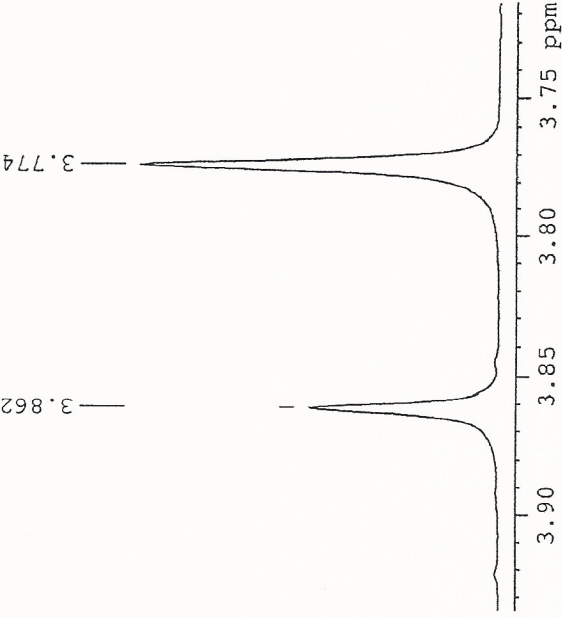
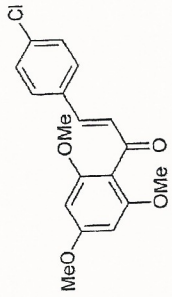
==== CHANNEL f1 =====  
NUC1 1H  
P1 7.50 usec  
PL1 2.60 dB  
PL1W 6.62584448 W  
SF01 600.3345228 MHz  
SI 32768  
SF 600.3300113 MHz  
WDW EM  
SSB 0  
LB 0.30 Hz  
GB 0  
PC 1.00





INDOFINE Chemical Company, Inc.  
 121 STRYKER LANE  
 BLDG. 30, SUITE 1  
 HILLSBOROUGH, NJ 08844

Catalog No.: 19-490  
 Product name: 4-Chloro-2',4',6'-trimethoxychalcone  
 Lot No.: 0205103



1H IN CDCL3  
 AVANCE-600

SOLVENT CDCL3  
 NS 8  
 DS 0  
 SRH 9803.922 Hz  
 FIDRES 0.326819 Hz  
 AQ 1.5299480 sec  
 RG 22.6  
 DW 51.000 usec  
 DE 6.00 usec  
 TE 298.2 K  
 D1 1.50000000 sec  
 TDO 1

==== CHANNEL f1 =====  
 NUC1 1H  
 P1 7.50 usec  
 PL1 2.60 dB  
 PL1W 6.62584448 W  
 SF01 600.3345228 MHz  
 S1 3276P  
 SF 600.3300113 MHz  
 EM  
 SSB 0  
 LB 0.30 Hz  
 GB 0  
 PC 1.00

